

The following mounting instructions must always be followed to avoid the risk of personal injury or property damage.

Read and understand the operating instructions and local safety instructions of forestry chains to be used.

SAFETY INSTRUCTIONS

1. ABOUT THIS INSTRUCTION

These mounting instructions describe in particular how OCTA STAR forestry accessories are to be safely used for pulling purposes.

To comply with these instructions is essential to help avoiding hazards and increases the reliability and service life of the forestry accessories.



DANGER! Indicates a hazardous situation, which, if not avoided, will result in death or serious injury.



WARNING! Indicates a hazardous situation, which, if not avoided, could result in death or serious injury.



CAUTION! Indicates a hazardous situation, which, if not avoided, could result in minor or moderate injury.



NOTICE! Is used to address practices not related to physical injury.



Safety Instructions signs indicate specific safety-related instructions or procedures.

DEFINITIONS



Clevis

A U-shaped fitting with pin.

Pulling force limit (PFL)

The maximum tensile force a forestry accessory is intended to withstand.

2. BASIC SAFETY REQUIREMENTS



The pulling force limits must not be exceeded, not even by blocking the pulling movement by stones or tree stumps, as well by a bigger pulling force of the winch!

Forestry chains and accessories in operation must be free from defects!

Lifting of loads or persons is prohibited!

Working under the influence of drugs, medications impairing the sense and/or alcohol is strictly forbidden!

- Operators, fitters and maintenance personnel must in particular observe operating instructions of the chain slings into which the connecting links are to be installed, as well as ISO 3056 (Non-calibrated round steel link lifting chain and chain slings; Use and maintenance) Chapter 5, figures 5 a), b) and c) and Chapters 6 to 9.
- The specific safety and operating regulations and standards issued locally in the country where the items are used must be observed.
- During operation work, wear your personal protective equipment!
- The directions given in these mounting instructions and specified documentations relating to safety, assembly, operation, inspection, and maintenance must be made available to persons operating and using the shortening hooks.
- These mounting instructions must be available in a place near the product during the time the equipment is used. Please contact the manufacturer if replacements are needed. Also see chapter 11.
- **Improper assembly and use may cause personal injury and/or damage to property.**
- Assembly and removal as well as inspections and maintenance must exclusively be carried out by skilled, qualified, trained and authorized persons only.
- Structural changes are impermissible (e.g. welding, bending).
- **Operators must carry out a visual inspection and, if necessary, a functional test of the safety equipment before each use.**
- Never use worn-out, bent or damaged forestry accessories or forestry chains with defect components.
- Only handle loads that do not exceed the pulling force limit of the corresponding forestry chain assembly.
- Never expose forestry accessories to loads exceeding the specified pulling force limit.
- Only chains and forestry accessories of the same nominal size and grade may be connected.
- **No one including you (operator) must be in the way of the moving load (hazard area).**
- Safety elements must not be excessively stressed or strained operationally.
- Do not use force when mounting/positioning the forestry accessories.
- Do not twist or knot the chains together.
- Avoid bending loads to act on forestry accessories.
- During handling your hands or other body parts must not come into contact with forestry chains or accessories. Only remove components manually (use your hands).
- Avoid impacts, e.g. due to abruptly pulling loads with chain in slack condition.
- Usage without working safety elements (cotter pins, dowel pins, safety latches) is not permissible.

SAFETY INSTRUCTIONS

- In the event of doubts or concerns about the proper and safe use, inspection, maintenance or similar things contact your safety officer or the manufacturer.

THIELE is not responsible for damage caused by non-observance of the instructions, rules, standards and notes indicated!

3. DESCRIPTION AND INTENDED USE

OCTA STAR forestry accessories are exclusively intended to be used for pulling trees during forestry work.

The corresponding chains to be used must be manufactured according to ASTM A391/A391M-21 or similar.



Forestry accessories must exclusively be used

- within the limits of their permissible pulling force limit,
- for permissible attachment methods,
- within the temperature limits prescribed,
- by trained and authorized persons.

OCTA STAR forestry accessories feature a safety factor of at least 4 based on the pulling force limit.

Forestry accessories are marked with nominal chain size and grade, manufacturer's mark "KWS" and traceability code.

Clevis choker hooks are intended to connect the choker chain with the winch cable. Clevis choker hooks can be hooked into the winch cable without assembly work.

Cable sliding bows are intended to connect the choker chain with the winch cable.

Wire gliding hooks are mounted on the winch cable and are intended for the hooking of choker chains or cable slings.

Clevis forestry hooks are used as end fittings of forestry chains. They can be used to create loops for slinging around tree trunks for choker hitch applications.



4. COMMISSIONING

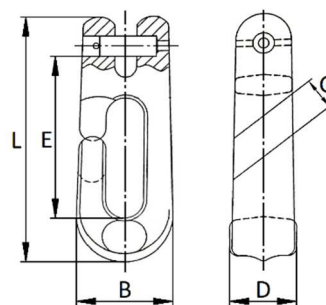
Prior to using the components for the first time assure that

- the components comply with the order and have not been damaged,
- test certificates and mounting instructions are at hand,
- markings correspond with what is specified in the documentation,
- inspection deadlines and the qualified persons for examinations are determined,
- visibility and functional testings are carried out and documented,
- documentation is safely kept in an orderly manner.

Dispose of the packing in an environmentally compatible way according to local rule.

5. TECHNICAL DATA

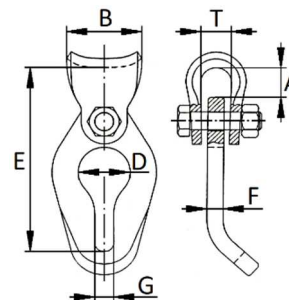
5.1 Clevis choker hooks



Nom. size	Mark.	Article no.	PFL [lbs]	Dimensions [mm]					Mass [lbs]
				E	L	B	D	G ¹⁾	
5/16	8-8	Z08385	8 800	80	123	47	32	16	1.5

1) The dimension G indicates the maximum wire rope diameter 5/8 in.

5.2 Cable sliding bow

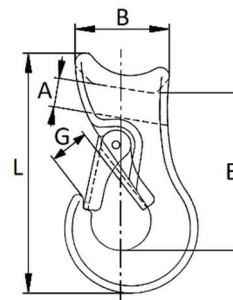


Nom. size	Mark.	Article no.	PFL ²⁾ [lbs]	Dimensions [mm]							Mass [lbs]
				E	B	D	G	T	F	A ³⁾	
5/16	8-8	Z08388	6 700	123	49	34	12	20	11	20	1.43

2) The reduction of the load capacity of the chain of nominal size 8-8 to 75 % due to the chain shortening is included.

3) The dimension A indicates the maximum wire rope diameter 3/4 in.

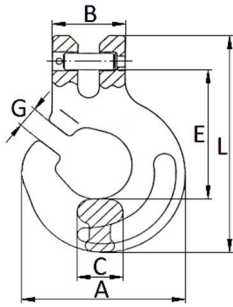
5.3 Wire gliding hook with safety latch



Nom. size	Mark.	Article no.	PFL [lbs]	Dimensions [mm]					Mass [lbs]
				L	A ⁴⁾	G	B	E	
3/8	10/13-8	Z08386	7 000	132	17	18	50	87	1.5
1/2									
5/8	16-8	Z08387	8 800	151	22	19	64	101	2.67

4) The dimension A indicates the maximum wire rope diameter 1/2 in for nominal size 3/8-1/2 and 5/8 in for nominal size 5/8.

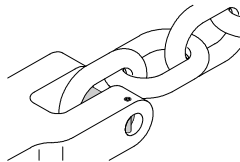
5.4 Clevis forestry hooks



Nominal size	Mark.	Article no.	PFL [lbs]	Dimensions [mm]						Mass [lbs]
				E	L	G	A	B	C	
9/32 5/16	7/8-8	Z08389	8 800	59	96	10	73	35	18	0.82
3/8	10-8	Z08390	13 900	74	137	13	97	44	22	1.98

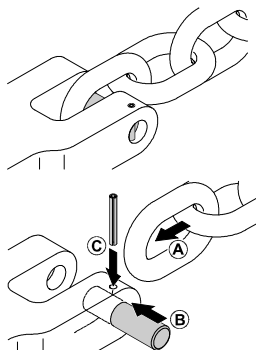
6. CLEVIS FASTENING SYSTEM

The clevis fastening system only permits attachment of the nominal chain size that suits the attachment component.



6.1 Assembly

- If necessary, remove dowel pin and pin.
- (A) Place end of chain leg between the lateral clevis elements.
- (B) Push pin from the side fully into the clevis and through the last chain link of the leg.
- (C) Drive dowel pin fully in (must not project) to secure the pin. The slot must face away from the pin.

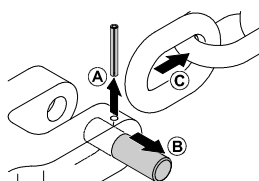


WARNING
 Check whether the chain runs smoothly!

The dowel pins must only be installed once.

6.2 Disassembly

- Slacken the respective chain.
- (A) Drive dowel pin out using hammer and drift punch¹⁾.
- (B) Push pin out using a drift punch.
- (C) Remove the chain.



1) Suitable drift punches are available by Article No. Z03303.

7. CONDITIONS OF USE

7.1 General

Assembly and disassembly are only carried out in unloaded condition.

The specifications of the pulling force limits assume a horizontal load without deviation. Special hazards exist in the form of steep and impassable terrain, as well as proximity to buildings and roads/trails. In such cases, greater safety can be achieved by selecting a stronger nominal size.

All components to be installed or used must be in perfect condition and the relevant pulling force limits of all parts must accommodate the respective load to be handled.

7.2 Cable sliding bow

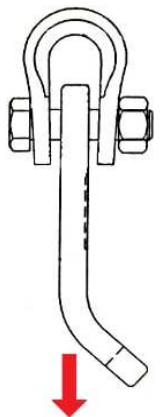
When delivered, the lock nut is only loosely fitted on the screw. To install the cable sliding bow, first remove the upper part and place it on the wire rope or pass the end of the wire rope directly through the upper part.



DANGER
 Prior to first use, make absolutely sure that the lock nut is correctly connected to the screw.



WARNING
 The lock nut must be screwed onto the screw until the locking part is completely on the thread. The lock nut should only be used once. The upper part must be able to move freely on the wire rope. The lower part must be able to move freely on the screw.



WARNING
 Ensure the correct positioning of the chain so that the loaded chain leg and the lower part are aligned in the direction of the red arrow (see figure). Only one loaded chain leg is permitted.

7.3 Wire Gliding Hook with Safety Latch

Ensure that the safety latch is closed when in operation.

7.4 Influence of temperature

The application temperature range is -40 °F to 400 °F (-40 °C to 205 °C).



DANGER
 If components have been exposed to temperatures exceeding the maximum value specified, they must not be used furthermore.

7.5 Environmental influence



Forestry chains and accessories must not be used in environments where acids, aggressive or corrosive chemicals or their fumes are present. Hot-dip galvanizing or an electro galvanic treatment is prohibited as well.

8. INSPECTION, MAINTENANCE, DISPOSAL

8.1 General



Inspections and maintenance must be arranged by the Owner!

Inspection intervals must be determined by the Owner!

Visual inspections must be regularly carried out and documented by competent and trained persons, at least once a year or more frequently if the components are in heavy duty service. After three years at the latest they must additionally be examined for cracks. A load test is not a substitute for this examination.

The results of the inspection shall be kept in a file that has to be set up for each component before first use. The register shall show characteristic data of the chains and components as well as identity details.

Immediately stop using shortening hooks that show the following defects:

- missing or illegible identification/markings
- deformation, elongation or fractures of chains or components
- cuts, notches, cracks, incipient cracks, pinching
- components heated beyond permissible limit
- severe corrosion
- reduction of the averaged pin diameter by more than 10 % as mean value of measurements taken perpendicularly towards each other
- missing or damaged dowel pins.



Cleaning (e.g. prior to inspections) must not take place by using flames or methods that might cause hydrogen embrittlement (e.g. pickling or immersion in acidic solutions).

8.2 Maintenance and repair



Maintenance and repair work must only be performed by competent and trained persons.

Minor notches and cracks may be eliminated by careful grinding observing the maximum cross section reduction requirement of max. 10 % and avoid making more severe cuts or scores.

All maintenance and repair activities must be documented properly.

8.3 Disposal



All steel components and accessories taken out of service must be scrapped in accordance with local regulations and provisions.

9. SPARE PARTS



Use only original spare parts.

Sets for clevis fastening system consists of pin and dowel pin.

Nominal size	Marking	Article no.
9/32 5/16	7/8-8	Z07147
3/8	10-8	Z07148

For the cable sliding bow a special screw is used. Ask the manufacturer in case of replacement.

10. STORAGE



Forestry accessories must be stored in dry conditions at temperatures between 32 °F and 104 °F.

Do not store in a manner that causes mechanical damage.

11. INSTRUCTIONS DOWNLOAD



Current operating and installation instructions are available as a PDF download on the website www.kwschain.com.



12. PUBLISHING INFORMATION

Company	KWS Inc. (Distributor)	THIELE GmbH & Co. KG (Manufacturer)
Postal address	P.O. Box 470487 Tulsa, OK 74147 USA	Werkstrasse 3 58640 Iserlohn Germany
Phone number	+1 (539) 367 2274	+49 2371/947-0
Fax number	+1 (539) 367 2278	+49 2371/947-241
Email	sales@kwschain.com	info@thiele.de